



MAGNUS

PRACTICE FACILITATION

HEALTHCARE CONSULTING



Training Module: Understanding Quality Improvement, Patient Safety and Clinical Quality Measures in Primary Care Settings

Courtesy of Magnus Practice Facilitation, LLC





Table Of Contents

What is Quality Improvement (QI)?

Clinical Quality Measures

Common QI Tools and Techniques

Patient Safety Importance and Goals

Steps to Implement QI, Patient Safety and Clinical Quality

Measures

Test Your Knowledge



Understanding Quality Improvement (QI), Patient Safety, and Clinical Quality Measures in Primary Care Setting

Objective:

To introduce staff to the principles of Quality Improvement (QI), Patient Safety, and key clinical quality measures relevant to the practice, emphasizing their importance in enhancing patient care and operational efficiency.

What is Quality Improvement (QI)?

Quality Improvement (QI) refers to systematic efforts to enhance healthcare services and outcomes. In a doctor's office, QI involves evaluating and improving the processes related to patient care, ensuring safety, enhancing service delivery, and increasing patient satisfaction.

Why is QI Important?

- **Improves Patient Care:** QI initiatives focus on enhancing the quality of care provided to patients, leading to better health outcomes.
- **Increases Efficiency:** By streamlining processes, QI can reduce waste, minimize errors, and optimize resource utilization.
- **Enhances Patient Satisfaction:** A commitment to QI fosters a patient-centered approach, improving the overall experience for patients.
- **Facilitates Compliance:** QI helps ensure compliance with healthcare regulations and standards, reducing the risk of penalties and improving practice reputation.

Key Principles of QI:

- **Patient-Centered Care:** Focus on the needs and preferences of patients.
- **Data-Driven Decision Making:** Use data to identify areas for improvement and measure progress.
- **Team Collaboration:** Engage all staff members in the QI process, leveraging their insights and expertise.
- **Continuous Improvement:** Emphasize that QI is an ongoing process, not a one-time project.

Clinical Quality Measures

Clinical Quality Measures (CQMs) are tools that help measure and track the quality of healthcare services provided. They play a critical role in initiatives like HEDIS and MIPS.

What is HEDIS?

HEDIS (Healthcare Effectiveness Data and Information Set) is a set of performance measures developed by the National Committee for Quality Assurance (NCQA). It evaluates the effectiveness of healthcare services in various areas, such as preventive care, chronic disease management, and behavioral health. HEDIS measures are widely used by health plans to report on the quality of care provided to their members.

What is MIPS?

MIPS (Merit-based Incentive Payment System) is a program under the Quality Payment Program (QPP) established by the Centers for Medicare & Medicaid Services (CMS). It incentivizes healthcare providers to report on quality measures, improve care quality, and enhance practice efficiency. Providers are scored based on performance in four categories: Quality, Cost, Improvement Activities, and Promoting Interoperability.

Key Clinical Quality Measures Related to HEDIS and MIPS:

1. Preventive Care Measures:

- Screening for breast cancer (mammograms)
- Colorectal cancer screenings
- Cervical cancer screenings
- Annual flu vaccinations

2. Chronic Disease Management Measures:

- Hemoglobin A1c control for patients with diabetes
- Blood pressure control for patients with hypertension
- Statin therapy for patients with cardiovascular disease

3. Patient Experience Measures:

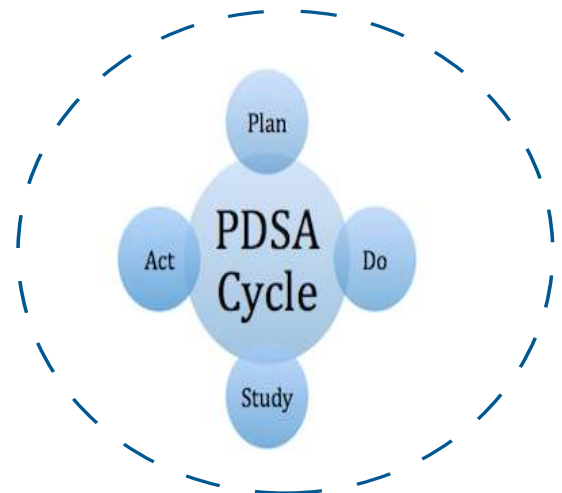
- Patient satisfaction scores (CAHPS)
- Communication with healthcare providers

4. Care Coordination Measures:

- Timely follow-up after hospital discharge
- Medication reconciliation after transitions of care

Common QI Tools and Techniques:

- **PDSA Cycle (Plan-Do-Study-Act):** A systematic approach for testing and implementing changes to improve processes.
- **Root Cause Analysis:** A method for identifying underlying causes of problems.
- **Patient Feedback Surveys:** Collecting feedback from patients to gain insights into their experiences.



Patient Safety Goals:

Patient Safety: Importance and Goals

Patient safety is a critical component of healthcare quality. Ensuring the safety of patients helps prevent errors and adverse events, leading to better health outcomes.

- **Patient Identification:**

Use two identifiers (e.g., name and date of birth) to confirm patient identity before administering any treatment or medication.

- **Medication Reconciliation:**

Conduct medication reconciliation at every patient visit to ensure accurate and complete medication lists.

- **Documentation of Administered Vaccines:**

Document all administered vaccines in the patient's record immediately after administration.

- **Other Patient Safety Recommendations:**

- Follow proper hand hygiene protocols.
- Promote clear communication among healthcare providers and with patients.





Risk Incident Reporting: A Key Component of Patient Safety

Risk incident reporting allows staff to document and communicate safety incidents or near misses. This process is essential for identifying risks and implementing corrective actions to enhance patient safety.

Importance:

1. Enhances Patient Safety: Identifies patterns that could compromise safety, enabling timely interventions.
2. Promotes a Culture of Safety: Encourages reporting without fear of retribution, fostering a focus on safety and continuous improvement.
3. Facilitates Learning: Each incident provides opportunities for improvement in safety protocols.

Key Steps for Effective Risk Incident Reporting:

- **Timeliness:** Report incidents promptly to ensure accurate recollection of events and facilitate quick action.
- **Confidentiality:** Maintain confidentiality to protect patient and staff information during the reporting process.
- **Use Reporting Tools:** Familiarize yourself with the specific tools or systems used in the practice for reporting incidents (e.g., electronic forms, incident logs).
- **Follow-Up Actions:** Ensure reported incidents are reviewed and analyzed to implement necessary corrective measures.

Steps to Implement QI, Patient Safety, and Clinical Quality Measures:

1. **Identify Improvement Areas:** Gather input from staff and patients.
2. **Set Measurable Goals:** Establish clear, achievable goals for improvement efforts.
3. **Collect and Analyze Data:** Use data to assess current processes and measure improvements.
4. **Engage Staff:** Involve all team members in the initiatives.
5. **Monitor Progress:** Regularly review progress toward goals and make adjustments.



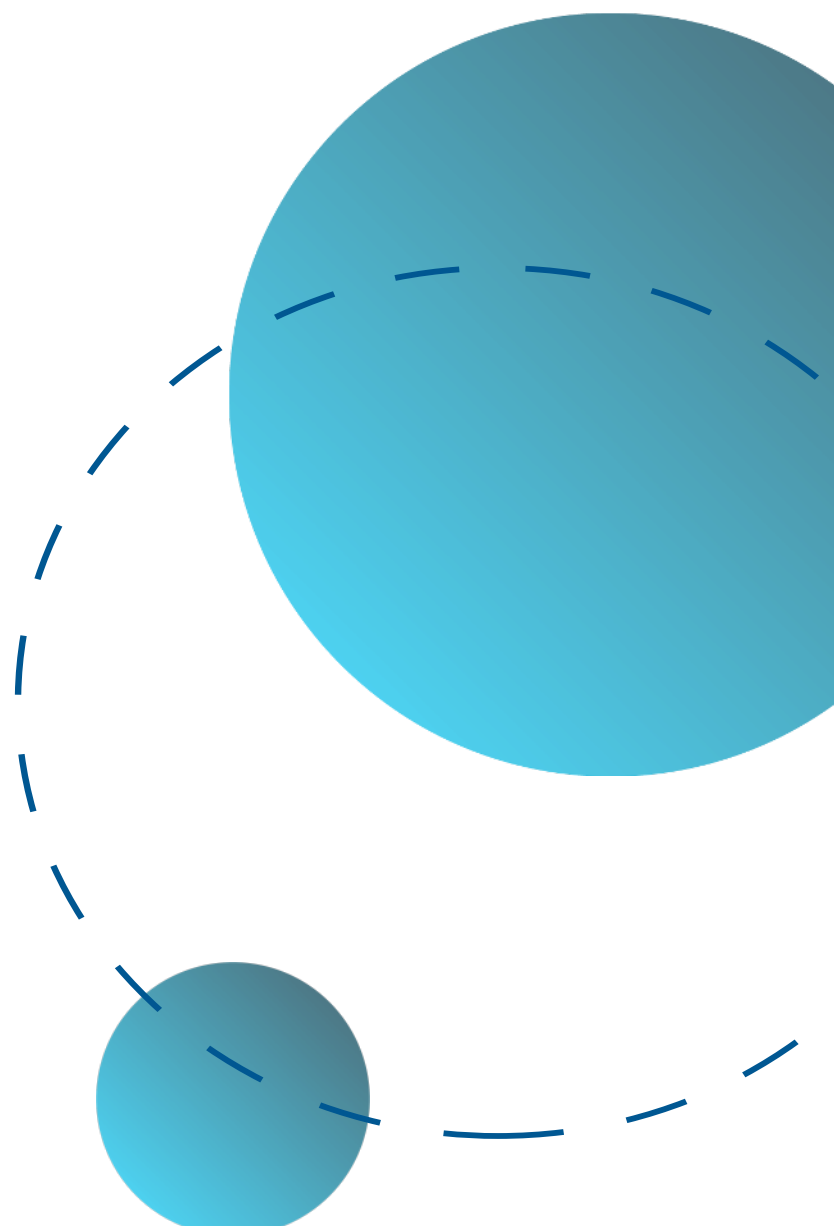
Conclusion:

Quality Improvement, patient safety, and adherence to clinical quality measures are vital for enhancing patient care in a doctor's office. Your participation in these initiatives will contribute to the overall success of the practice and improve patient outcomes.

Important: Please ensure that you complete the accompanying quiz to reinforce your understanding of the material covered in this training session. Your responses will help us assess your grasp of QI principles, patient safety measures, and clinical quality initiatives, which are crucial for your role in our practice.

Questions? Feel free to ask any questions about QI, patient safety, HEDIS, MIPS, or how you can contribute to improvement efforts in our practice!

- Magnus Practice Facilitation
www.magnuspracticefacilitation.com
(877) 456-7659

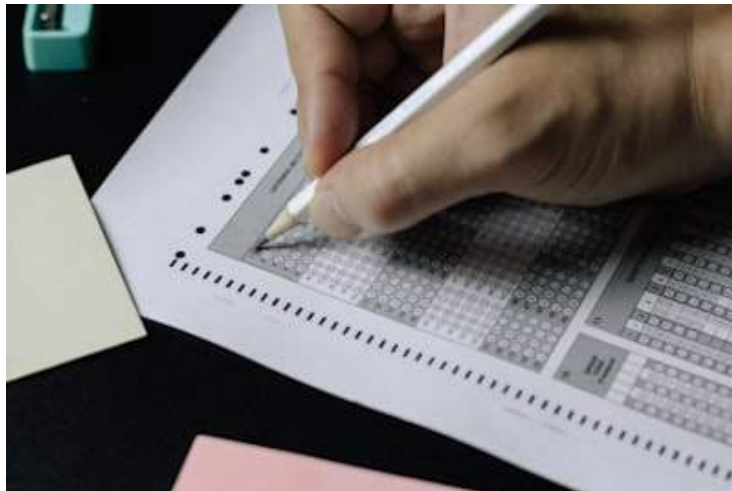


Test Your Knowledge

Training Quiz: Quality Improvement, Patient Safety, and Clinical Quality Measures

- 1. What does QI stand for?**
 - a) Quality Improvement
 - b) Quality Indicator
 - c) Quality Investigation
- 2. Which of the following is a primary goal of QI?**
 - a) Reduce patient satisfaction
 - b) Increase operational inefficiencies
 - c) Improve patient care
- 3. What are two identifiers used for patient identification?**
 - a) Social Security Number and Address
 - b) Name and Date of Birth
 - c) Phone Number and Email Address
- 4. What is HEDIS?**
 - a) A type of medication
 - b) A performance measurement tool
 - c) A patient safety protocol
- 5. MIPS stands for:**
 - a) Merit-based Incentive Payment System
 - b) Medical Improvement Payment System
 - c) Multi-Indicator Performance System
- 6. Why is medication reconciliation important?**
 - a) It ensures accurate and complete medication lists.
 - b) It increases appointment wait times.
 - c) It reduces the number of patient visits.

7. **What does the PDSA cycle stand for?**
- a) Plan-Do-Study-Act
 - b) Prepare-Develop-Solve
 - c) Promote-Deliver-Settle
8. **Which of the following is a key principle of QI?**
- a) Data-Driven Decision Making
 - b) Resistance to change
 - c) Focus on individual patient preferences only
9. **What is one of the primary goals of patient safety?**
- a) Increase hospital readmission rates
 - b) Prevent errors and adverse events
 - c) Limit communication with patients
10. **What is the primary purpose of risk incident reporting in a healthcare setting?**
- a) To increase appointment scheduling
 - b) To identify and prevent patient safety incidents
 - c) To enhance administrative tasks



Answer Sheet

- a) Quality Improvement
 - c) Improve patient care
 - b) Name and Date of Birth
 - b) A performance measurement tool
 - a) Merit-based Incentive Payment System
 - a) It ensures accurate and complete medication lists.
 - a) Plan-Do-Study-Act
 - a) Data-Driven Decision Making
 - b) Prevent errors and adverse events
 - b) To identify and prevent patient safety incidents
-

To learn more about how Magnus Practice Facilitation can support you in sustainable practice transformation, contact us today for a consultation.

Training Module...

"Training Module Understanding Quality Improvement QI- Patient Safety and Clinical Quality Measures in a Healthcare Setting" equips healthcare staff with essential principles of Quality Improvement, emphasizing its role in enhancing patient care and operational efficiency. This comprehensive guide covers critical areas such as patient safety, clinical quality measures, and effective QI tools like the PDSA cycle, fostering a culture of continuous improvement and safety. Engage with actionable insights and practical strategies to transform your practice and elevate patient outcomes.



This guide is for educational purposes only.